

VC-TR41_TR41N Firmware(FW) Update Manual

Read me first!!






After performing a Factory Reset, all previously configured parameters will be restored to their default settings.

Therefore, please make sure to export the Profile before performing the Factory Reset. After the factory reset is completed, import the Profile to restore the original settings.



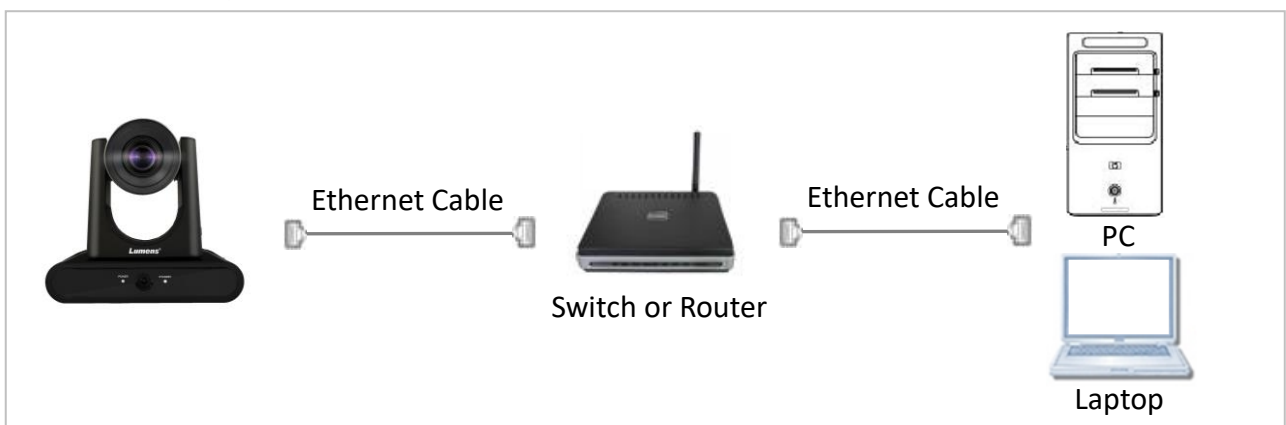
1 Device and Tool Preparation

1.1 Please prepare following devices and tools before FW upgrade.

VC-TR41	PC or Laptop
	 or 
Power adapter and power cord	Ethernet cable
	

2 Connections

2.1 Connecting via switch or router.



3 FW Download

3.1 Open browser and enter the IP address of the camera in the address bar. You can check the IP address from [Status]> [Ethernet] in the menu.



3.2 Enter the account and password to log in webpage.

Account: admin

Password: 9999(Default)

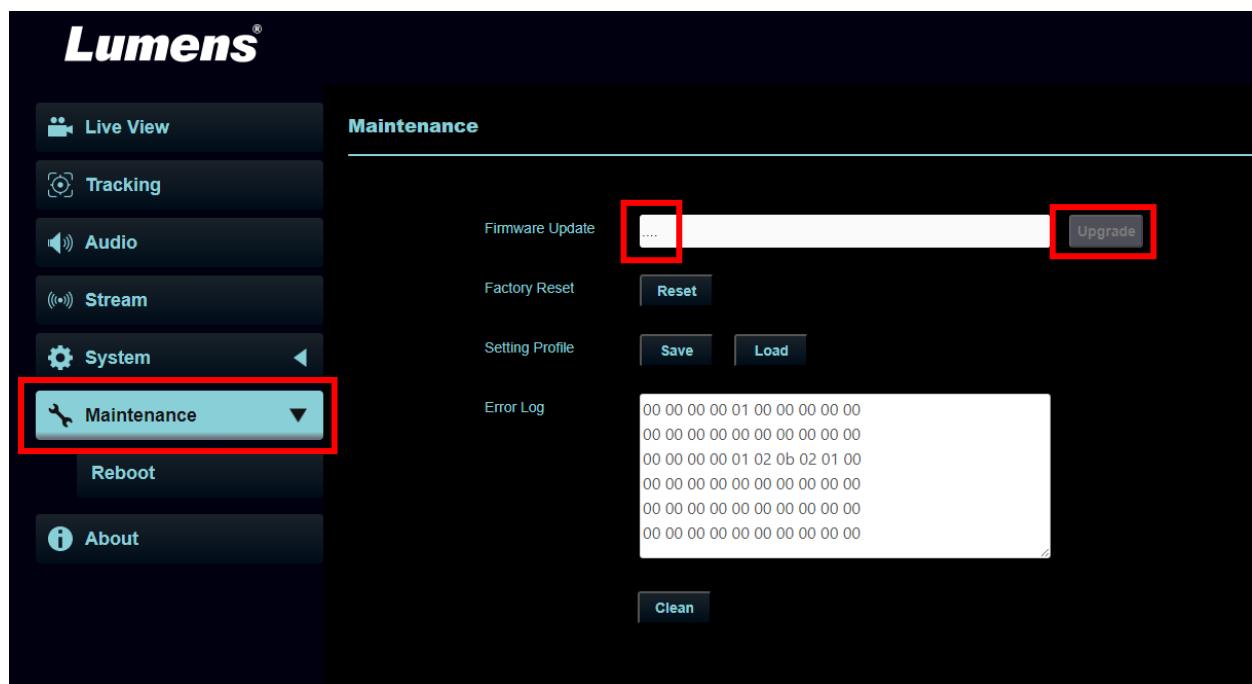
Sign in to access this site

Authorization required by http://192.168.4.141
Your connection to this site is not secure

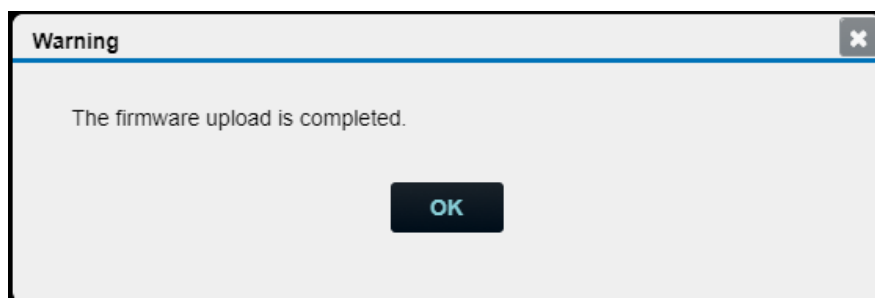
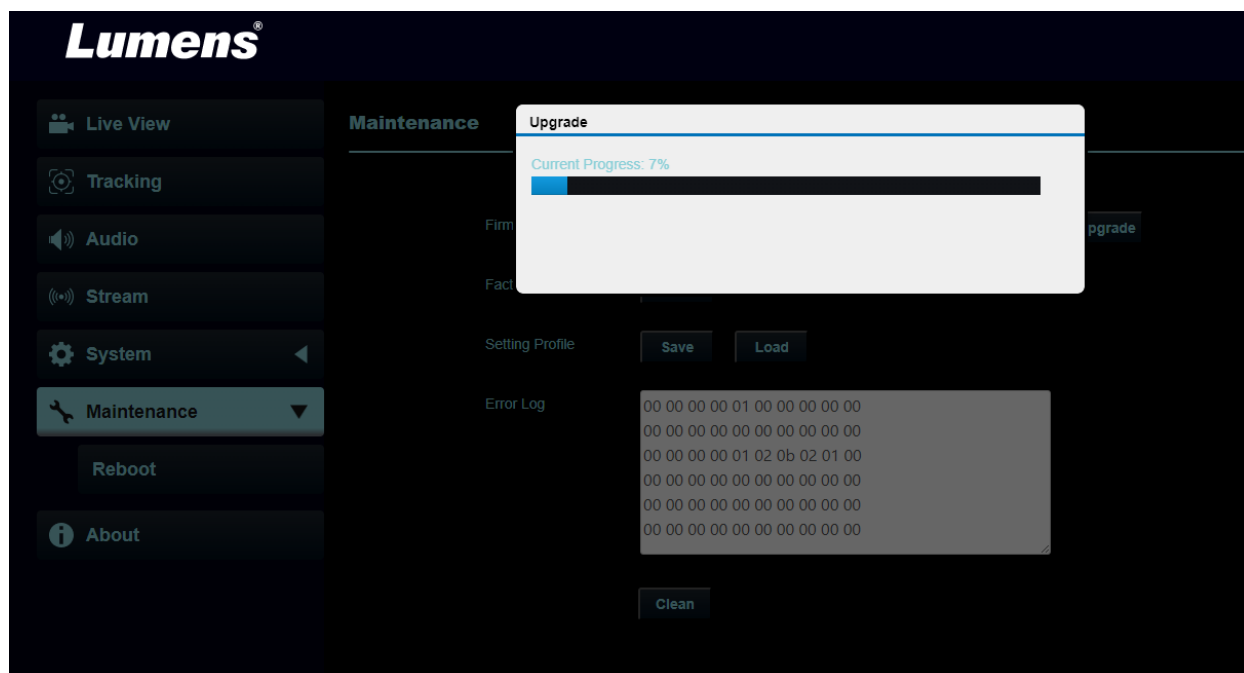
Username

Password

3.3 Select [Maintenance]> [...] to select firmware file and press [Upgrade].



3.4 FW download starts, please don't close the page. (Around 2-3 minutes taken)



3.5 Login webpage again and check the FW version from [About]> [Firmware Version].

